



FEBRUARY, 2011

TOURNAMENT SCHEDULE FOR DISTRICT 5

February 19-20	Canton Winter Sectional
March 4-6	Akron Springtime Sectional
March 25-27	Titusville Seven Cities Sectional
April 1-3	Pittsburgh Spring Sectional
April 1-3	Cleveland Ohio Masters Sectional
April 16-17	Erie Great Lakes Sectional
April 30-May 1	District 5 GNT Final

Tri- County Themes *by Alex Bealles*

Hi 229'ers. Hope everybody has had a good start to the year. Due to a publishing mishap, our article was not included in the last printed issue of the *Fifth Column*. Although it was in the on-line version, I've included all of the material here so that all of those who deserve recognition for their performances at and away from the bridge table are acknowledged.

Several Unit 229'ers did well at the Labor Day regional. **Henry Nelson** led the way with wins in Bracket 2 of two knockout events and a first place finish in flight X of the A/X Swiss teams on Monday. **Bill Lindgren** joined Henry in victory in one of the KO's and the Swiss. **Karen Peters** and **Amy Tam** finished second overall in the Wednesday evening 299'er Pairs and second in B in the Saturday afternoon 299'ers. On Thursday afternoon, **Art Aronson** and **Nick Tredennick** finished 2nd overall in the Side Series. On Friday, **Jean Purvis** and **Phyllis Park** finished 2nd in B in the 299'ers. **Carl Bonfiglio** finished second in B and first in C in Saturday's 2-session Open Pairs. In the

BCD Swiss on Monday, **Alex Bealles'** team finished first.

We also did well at the Pittsburgh Fall sectional in November. The team including **Barbara Norante**, **Lorraine Worsley** and **Bob Freeman** finished second overall in the top bracket of the handicapped KO's. In the Saturday morning pairs, **Bill Lindgren** and **Henry Nelson** finished second overall in flight "B". **Ellie** and **John Scalzo** finished second in "C" in the same event. That afternoon, Bill and Henry finished first overall. **Lynn Thiel**, **Jo Anne Mujwit** and **Rita Gavert** led the winning team in Sunday's 299'er Swiss.

At the September Unit game, the overall winners were **Jim Wheeler** and **Marge Tamres**. First N/S were **Herman Feldman** and **Bill Blank**. In October, **Helen Greenberg** and **George Cross** finished first. **Dolores Kelly** and **Pat Wilde** were first E/W. In November, **Lynn Rafferty** and **Marilyn Entzi** were first overall. **Pat Wilde** and **Helen Greenberg** were first E/W. At the December Christmas party, held at the Connoquenessing Country

Club, the overall winners were **Sally Veauthier** and **Jim Wheeler**. First E/W were **John Killmeyer** and **Carl Hamill**. The next time you see her, thank **Marylou Ford** for the hard work and excellent presentation which she provides every month at our unit game.

Kudos to **Diana Boak** of New Castle for her efforts on behalf of the Lawrence County ARC. Due to her efforts, District 5 will be donating \$5000 to help house their mentally disabled clients.

Until next time, awbealles@zoominter.net.net.

Unit 111 News *by Cathy Masteller*

Our condolences and deepest sympathy go to **Agnes Heard**, **Pauline Sostarich**, and their families. They each lost their husbands in October.

The Thursday Morning Bridge Game in Youngstown participated in the InterClub Championship Game on October 1. There were 295 pairs in the competition, and we're proud to announce that **Irene Ashead** and **Liz Kelly** scored a 61.77% game, earning them 9th in A, 5th in B, and 3rd overall in C — they were awarded 3.60 Masterpoints. Congratulations!

Not just another bridge player, **Dale Fishbeck** was awarded a blue Ribbon at the Trumbull Art Gallery and also a blue ribbon at the Canfield Fair. Dale creates Quilt Pictures and is quite accomplished and creative. If you know of an accomplishment of one of our bridge players, please let me know so that we can share this with our unit! Email me at cmasteller@att.net. Thanks. Many thanks also to **Sally Veauthier** for her regular input and for keeping me informed (and you all thought I just knew everything!).

We had one rank change in the past couple months. That was **Henry Clarett** who became a sectional master. Of interest is that **Charles Smith** who is well-known by many of our unit members became a gold life master. Congratulations to you both!

2010 ended with a lot of partying!

On December 4, Warren had a brunch with 12 tables. Overall winners follow:

1. **B Olmstead/ L Rafferty**
2. **V Knox/ D Guerra**
3. **B Merkich/ T Matrazzo**
4. **C Beardsmore/ D Fishbeck**
5. **R Muccio/ B Cornwell**
6. **C Abruzzo/ B Young**

On December 12 the SS Club had a 12 table party. Section winners follow:

N/S

1. **L Rafferty/ M Entzi**
2. **M Irwin/ C Ivan**
3. **K Kreps/ R Carter**
4. **C Coleman/ S Veauthier**

E/W

1. **M Roberts/N Michaels** (71% WOW!)
2. **V DeJong/ D Bloom**
3. **R Muccio/ S Sevant**
4. **C Johnson/ B Merkich**

The November Unit game overalls follow:

1. **G & K Braun**
2. **B Merkich/ T Matrazzo**
- 3/4. **C Marsteller/ C Ivan**
J Oheren/ M Artman

Deadlines for Columns and Tournament Information:

April Issue – March 1
June Issue – May 1
August Issue – July 1

Send Items To:

Sharon Robertson
23417 E. Baintree Road
Beachwood, Ohio 44122
Sunuzzer@aol.com (216) 382-6948

Our unit was unable to partake in the STaC games this year due to the weather.

We now have a new webmaster, **Bob Kramer**. Please send any comments or concerns to him at Snowyow1000@gmail.com. Bob has volunteered to carry on the fine work that was started and organized by **Chuck Coleman**. Thanks for all your good work, Chuck!

Mary Ann Sukonik has left Mexico and is working in New York City in a program for all foreign graduate doctors. She is awaiting her board results and hopes to land a residency in Youngstown in general practice. She is a perfect example of never being too old to accomplish your dream. She has just celebrated her 50th birthday!

In December **Sandra & Bill Lippy** were on a cruise and played in a regionally rated tournament on the ship. The host and lecturer was **Larry Cohen** (author of *The Law of Total Tricks*). He wanted to meet with Bill to discuss changing his teaching techniques on his website. It seems he had been on Bill's website (www.TheLippyLibrary.com) and was fascinated with the format of the informative and teaching programs. So now Bill is serving as his consultant in a way. Isn't life strange! I guess it's true that we all have something to offer and you will never know how many people you will touch in how many ways!

See you at the bridge table in 2011.

Whistfully Yours *by Bev Carter*

"Tis the season" ... yeah, I know the holidays are now behind us (and I hope you had a really happy one!!!) so the season I'm talking about is our annual quest for folks from Unit 125 to run for our Board of Directors. Elections are held at our annual sectional tournament in April, so if you have an interest in the betterment of bridge in our Unit, you need to contact someone on our nominating committee to get your name on the ballot. The committee consists of: **Barb Bacon, Geraldan Jones, Sue Pisanelli, Kermit Wolford** and **Ginny Young**, who also happen to be the outgoing members of our current board. We want to take a minute to thank them for their dedication to make our Unit run as smoothly as possible and for giving their time and effort to represent its members in the best possible way. But to get back to your being a member of this group ... you can also let any current board member know of your interest. Current members (just in case you aren't sure who to contact) are: **Barb Greenspan, Fleur Howard, Harriet Kitay, Rosemary Kleis, Ellen Miles, Frank Scali, Jim Stahl, Kathy Sulgrove, Ros**

Sukonik and **Mary Lou Vermerris**. Qualifications for board members are simple: be at the meetings which are held once a month to voice your opinions. Of course persistence, patience, enthusiasm and a willingness to promote bridge to each and every person you run into cuz we all know what a great game it is and what they are missing by not playing it would also help.

Our January Regional is now a thing of the past and my timing for writing this means I can't even begin to tell you who won what and how many tables we had, etc. etc. etc. So please visit our website, whistclub.org for all those details. Want to mention what a terrific job **Kathy Sulgrove** does in maintaining this site!!! I know what a tough, time consuming job it is since I had the pleasure of doing it before Kathy. So if you happen to run into her at the bridge table, tell her "thanks" for keeping us in the loop of what's going on in our bridge world. Kathy also has the distinction of being ranked as the 8th best woman bridge player in the world after her performance in the World Championships in

Philadelphia. Way to go, Kathy!!!

Our Unit has the pleasure of recognizing one or more of its members as “Honorary Member of the Year” at our annual dinner meeting in May. **Sharon Fairchild** is chairing the committee to select the 2011 person or persons who will be receiving this award. Any member of our Unit can submit a letter to her detailing what qualities an individual has that should make them the recipient of the award this year. Qualifications are:

- A member who actively promotes bridge within Unit 125
- A player who shows a high level of integrity and ethical competition with their partners and toward their fellow competitors
- Longevity as a member of ACBL and Unit 125 which shows a degree of involvement in Unit activities
- Nominees may be living or deceased

Awards are limited to 2 per year and open to all past or present Unit 125 members. Nominations must be submitted no later than 45 days prior to the Unit Dinner in mid-May. They can be mailed to Sharon at 18740 E. Shoreland Ave. Rocky River, OH 44116 or emailed to her at: shortsuit@sbcglobal.net.

A reminder that scholarship applications are available on line on our website whistclub.org. Scholarships are awarded at our annual dinner in May and applications are due no later than 45 days prior to this meeting. Please email them to magacarter@juno.com or mail to Bev Carter, 4505 Grand Teton Drive, Medina OH 44256. Any Unit member who has a child or grandchild attending or going to attend college is eligible to apply.

At the present time, our Unit Game is closed until it can be relocated. A committee has been formed to check out a new location and night. If you have any suggestions, please contact **Harriet Kitay**, **Barb Greenspan**, **Ellen Miles** or **Jim Stahl**. More on this when a decision has been made as to where and

when. In the meantime, be sure to attend local clubs in your area.

And of course, we can't end without a little humor:

A fellow made a bad bid and went for 1400. Sorry partner, he said. I had a card misplaced. “Only one?” asked partner innocently.

Important Rules:

Rule of Eleven

Result when you bid a slam

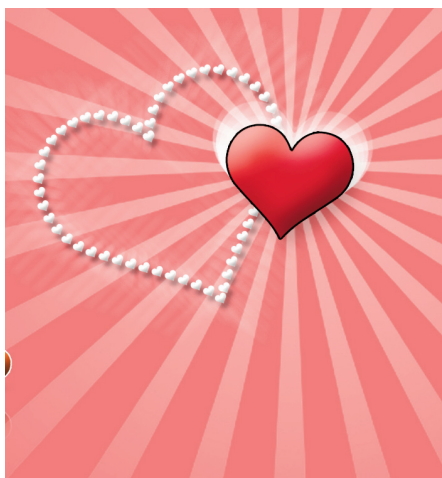
Second Hand Low

easiest way to lose your aces

Lead through Strength

surefire way to make your Q's disappear!

The first night of their honeymoon the phone rings, groom answers and talks about a bridge hand. The conversation lasts forever while the caller tells about how he went down in 6 spades. How can he be so inconsiderate moans the bride???? It's terrible that he had to call while we are on our honeymoon. You're right honey, especially since all he had to do was take a finesse!!!



Bridge is Cool in Buffalo *by Dian Petrov*

It was 51 degrees F on New Years Eve and the snow was on the East Coast – but bridge is still cool in Buffalo. The elections for the new board are over and **Kathy Pollock, Frank Kidd, Judy Kaprove** and **Dian Petrov** joined “the veterans” **Betty Metz, Judith Bailey, Fran Kurtz, Bob Lederhouse** and **Sue Neubecker** on the 2011 Board of Directors. One of the many goals of the new board is to reestablish the Unit Knockouts starting in April and to organize Unit-wide club games. According to ACBL regulation, a Unit-Wide Championship must be held simultaneously at three different sites. At this time we are unable to locate three participating clubs to satisfy this requirement in our unit. Therefore Unit 116 continued to hold regular Unit Games with separate overalls at each club. We would like to extend an offer to all bridge clubs in District 5 to join us in participating in Unit-wide games. There are huge masterpoints awards for players and also benefits for the clubs. Playing the same hands are not required and the comparison is on percentage basis. (In this respect games are similar to STaCs and Interclub Championship) So – if you are a bridge club official and your club is interested in participating in Unit-wide games – we would be glad to hear from you.

Now is the time to extend our thanks to the board members who served on the board last year: **John Toy** was on the board for many years including the last 6 years and worked hard for the good of bridge players. We wish him continued success sorting District affairs. **Pat Rasmus** is ACBL Volunteer of the Year for 2009 receiving the award on the latest NABC in Orlando. Enough said! **Stan Ziontz** was on the board shortly but as an Elections chairman his skills were tested to the limit.



The NAP winners from Unit 116 who will represent District 5 in Louisville, KY on Spring NABC 2011 are:

Flight A:

1. **Donna Steffan – Brian Meyer**
2. **John Toy – Daniel Gerstman**

Flight B:

1. **David Hemmer – Michael Ryan**
2. **Judith Padgug – Chongmin Zhang**

All of them are veterans with multiple appearances on NAPs and GNTs at the Nationals. We wish them success in March! **Dan Gerstman** just came from Orlando’s NABC with the second place finish in Base Senior Knockout Teams.

Masterpoints milestones:

Jay Levy crossed 5000 masterpoints and is a Diamond Life Master. He served as Unit 116 president and has had many bridge accomplishments including National title in 1995 (Golder Cup). **Madhav Deshmukh, Laura Houghtaling** and **Jane Roberts** are Club Masters and **Paul Zittel** is a Regional Master. Congratulations!

Happy New 2011 Year to all fellow bridge players!

Akron Alert *by Jim Sullivan*

Fall 2010 IMP League – The winners of the Fall session that ended in December were: Bracket A: 1st **Dick Early, Monica Early, Don Sulgrove, Kathy Sulgrove, & Laurie Kranyak.**

2nd **Phil Becker, Paul Facinelli, Dan Roseberry, & Fleur Howard.**

Bracket B: 1st **Jim Sullivan, Rose Cassmer, Mike Marks, & Larry Rosenthal.**

2nd **Shirley Lundstrom, Barb Schidowski, Sue Bussan, Mary Gleghorn, & Nancy Evans.**

Bracket C: 1st **Roy Larson, Jim Pivarski, Rich Huff, & Phil MacFarlane.**

2nd **Betty Miller, June France, Ken Gibson, & Wendy Gibson.**

Congratulations to all of the winners. Thanks to **Marv Shapiro** who chaired this IMP League and **Susan Bedall** who provided great hospitality.

Springtime Sectional March 4-6 – The location is the Quirk Center at 1201 Grant Avenue, Cuyahoga Falls, 44223. To get directions use one of the Internet directions finder, e.g. MapQuest. If you don't have access to the Internet, contact Tournament Chair **Bob Ryan** 330-819-4895 or e-mail bob@rdinsurance.com and he'll get directions for you. If you need a partner for any of the events, contact **Susan Bedall** at sbedall@att.net and phone 330-864-9396.

The calculations for all of the events will be the average of the players. There will be a Stratified 499ers Pairs game and Stratified Open Pairs events at both sessions on Friday, and Saturday. This Sectional will feature a three-session Bracketed Handicap KO Team event, with the first session at 7:00 p.m. on Friday and the final two sessions on Saturday. Times for the Saturday sessions will be 11:00 a.m. and 3:00 p.m. This should

still allow players time for their Saturday night social events. The Sunday event will be a Stratified Swiss Team Game starting at 11:00 a.m. Look for a repeat of our Sunday lunch pasta.

Membership Meeting – Membership Meeting and Banquet will be held at the Quirk Center on Sunday, April 10. After the banquet, there will be a short meeting followed by recognition of new Life Masters and awards presentation.

A Unit Championship Game will then follow.

Friday Unit Games – Get a partner, come on out to the Quirk Center and enjoy the fun, competition, and hospitality. If you need a partner, call **Jim Sullivan** at 330-659-4707. See the Friday Unit games Schedule on the akronbridge.org Web Site, in the Newsletter/Calendar, or below:

Feb. 4 – 12:30 A Club Championship Game.

Feb. 11 – 7:30 The second Winter IMP League team game.

Feb. 18 – 12:30 A Unit Championship Game.

Feb. 25 – 7:30. The third Winter IMP League team game

Mar. 4 – No Game Akron Sectional at the Quirk Center

Mar. 11– 12:30 A Unit Championship Game.

Mar. 18 – 12:30 A Unit Championship Game.

Mar. 25 –7:30 The fourth and final Winter IMP League team game.

Apr. 1 – No Game Cleveland Sectional

Apr. 8 – 12:30 A Unit Championship Game.

Apr. 10– 12:30 Annual Meeting & Unit Championship Game.

Unit 127 News *by Judy Lyons*

The results for the Yalta Team Game ran by **Steve Grzegorzewski** in Meadville, PA were: A Teams – #1 - **Shirley Irish, Marc Sylvester, Francis Tseng, Doris Kirsch** and **Mike Roberts**; #2 – **Steve and Bara Grzegorzewski, Chet Mody** and **Vern DeJong**; B Team – #1 – **Barb Spencer, JoAnn Endy** and **Jim and Karen McKay**. Steve started the Yalta Team Game 5 years ago in order to promote team games. The games are held on the 1st Monday of the month and are played for 6 consecutive months, starting at 7 p.m. The number of teams has run from 9 teams to 18. This year there were 11 teams. The team games are sanctioned by ACBL. ACBL has a method for handicapping and bracketing the team games so there is a level playing field. I asked Steve how he came up with the name “Yalta”. He said it came from the WWII Yalta Conference where the allies met to, as Steve said, “butt heads” to defeat Nazi Germany. And Steve is right; we do “butt heads” in bridge. And the team games have been a great idea.

Our EBA game on Wednesday night has been really lagging in attendance, probably because a lot of our players do not like to drive at night. It is worse in winter with driving and our snowbirds leaving. Starting the game at 6:30 p.m. has helped to a certain extent. But now we are really hopeful attendance will increase. **Pat Smith** is offering “Bridge Pointers” starting at 5 p.m. The cost of the lessons is \$5 and if you stay to play bridge, that \$5 covers the cost of your bridge game. This means that Pat is donating the cost of lessons to our bridge center. Also, he is starting a new novice game. This all begins on January 12 at 5 p.m. No wonder Pat is a

favorite at the bridge center. This game is the only game where proceeds go directly to help run our great bridge center. Pat is the director of this game and receives a modest stipend. We do have a monthly EBA game on a Sunday.

Congratulation to **Alan and Maureen Koseff** and **Chet and Lois Mott** on becoming NABC Masters, to **Dave McConahy** on becoming a Sectional Master. **Kathy Dobrzynski** took top honors in the Double Trouble game for the month of October as did **Anne Johnson** in the New Deal game and **Doris Kirsch** in the Grand Slam game. **Shirley Irish** was top in the New Deal game, **Judie Lamberton** in the Grand Slam game and **Rich Sollman** in Double Trouble for the month of November.

Several of us went up and played in the Buffalo Spooktacular Regional in October. **Steve Grzegorzewski** and **Chet Mody** took a 1st overall in a Friday Open Pair Side game; Saturday, **Judie Lamberton** and **Pat Smith** had a 5th place overall in an Open Pair Game and the team of **Shirley Irish, Jim Davis, Doris Kirsch** and **Lois DiPlacido** came in 3rd place in the Sunday Swiss Team Game.



**Seven Cities Sectional
Cross Creek Resort, 3815
St. Rt. 8, Titusville, PA**

(814) 827-9611 or
(800) 461-3137

March 25-27, 2011

RESULTS

Buffalo Spooktacular Buffalo NY 26-31 Oct 2010

Tuesday Morning Side – 9.0 Tables

A B C

- 1 Jim Brown – Peter Schneidau
2 1 Joyce Greenspan – Natalie
Abramson
4 2 Dorothy Duchnicki – Marilouise
Rankin
3 1 Bill Pope – Bev Pope
2 Ted Kahn – Richard McGowan

Tuesday KO 1 – 7 Tables

- 1 Donna Steffan – Jay Costello – Hans
Jacobs – Joseph Sauro – Jay Levy –
Randolph Seidenberg Jr
2 Jerry Geiger – Michael Ryan – Allen Beroza
– John Ziemer

Tuesday KO 2 – 6 Tables

- 1 Lane Byl – Hilda Fairweather – Wayne
Kershaw – Timothy Butt
2 Bonnie Bond – Eileen Matheson – Korrie-
Sue Marshall – Ann Wilkinson

Tuesday KO 3 – 6 Tables

- 1 Ivan Montgomery – Dominic Colucci –
Norma Mooney – Lucille Sallerson
2 Christine Pentesco – M Maureen Clark –
Allen Wirch – John Cullen

Tuesday Aft. 299er Pairs – 10.0 Tables

A B C

- 1 1 Bill Pope – Bev Pope
2 2 Sharon Chang – Jacqueline Chang
6/7 3/4 1/2 Gary Conners – Gwenyth Conners
6/7 3/4 1/2 Sandra Silverberg – Sol Messinger

Tuesday Aft. Side Game – 6.0 Tables

A B C

- 1 1 Suzanne Powell – Sally Parsons
2 2 Jill Smith – Doris Mikstay
4 4 1 Veronica Wuschenny – Darleen
Macmillan
2 Kay Thacker – Heather Dann

Tuesday Evening 299er Prs – 4.5 Tables

A B C

- 1 Peter Patterson – David Donaldson
2 1 Gabriel Tannenbaum – Gaurang
Sheth
3/4 2 James Madan – Sushil Amlani

Tuesday Open Pairs – 31.0 Tables

A B C

- 1 James Cummings – Harold Baba
2 Barry Senensky – Robert Kuz
4 1 Patricia Rasmus – Catherine
Majewski
8 2 J Howard Tate – F Ruth Tate
4 1 Franklin Kidd – Elizabeth Metz
6 2 Mike Silverman – Jerry Bierman

Tuesday Eve Side Series – 10.0 Tables

A B C

- 1 Christy Kellogg – Elbert
HargesheimerIII
2 1 1 B Bretzlaff – Alan Charters
3 2 Leigh Ives – Elizabeth Leclair
3 2 Patrick Demerse – Judy Parks

Wed AM 299er Pairs – 4.0 Tables

A B C

- 1 Joseph Rooney – Bill Boardman
2 1 Sandra Silverberg – June
Feuerstein
3 2 M. James Evans – Diane Evans

Wed Morning Side – 6.5 Tables

A B C

- 1 1 William Barbour – Michael Ryan
2 Walter Majewski – Stanley
Kozlowski
3 2 1 Michele Griffin – Susan Hill
4 3 2 Elizabeth Stewart – Judy Wighe

Wednesday Aft Side Game – 8.0 Tables

A B C

- 1/2 1 Inge Gallant – Barbara Libby
1/2 Patricia Young – Sharon Fairchild
3 2 Joseph Rooney – Bill Boardman

Wednesday Aft 299er Pairs – 5.5 Tables

- A B C
1 Natalie Abramson – Kenneth Wagner
2 Marilyn Sultz – Joyce Greenspan
3 1 1 Brenda Deacoff – Carolyn Williamson
4 2 2 Diane Evans – M. James Evans

Wed Eve Side Swiss – 12 Tables

- A B C
1 Claude Tremblay – Muriel Tremblay –
Judith Padgug – Kathy Pollock
2 1 1 Audrey Natoli – Elaine Brigman –
Anne Kampmeier – Norma Mooney
3 2 Lily Chew – Dale Anderson – Wayne
Kershaw – Hilda Fairweather
2 Robert Dewey – Jo Ann Filipe – Mary
Lyke – Claire Miles

Wednesday Open Pairs – 24.0 Tables

- A B C
1/2 1 1 Barbara Pieterse – Martin Pieterse
1/2 Cindy Mahn – Elizabeth McDowell
4 2 F Ruth Tate – J Howard Tate
2 Celia Rumm – Somer Rumm

Weds Evening Side Series – 7.5 Tables

- A B C
1 Christy Kellogg – Elbert
HargesheimerIII
2 1 John Bielinski – Mark Pascale
4 2 1 Beena Deshmukh – Madhav
Deshmukh
5 3 2 Stan Zions – Terri Zions

Wed-Thur KO Bracket 1 – 12 Tables

- 1 John Volpel – Robert Cannizzaro – Paul
Cherin – Sam Maitra
2 Jesus Arias – Barbara McLendon – Joan
Millens – Daniel Lavee

Wed-Thur KO Bracket 2 – 12 Tables

- 1 David Pickering – John Mackay – Clyde
Paul – Lorna Johnson – Diane K.M. Gordon
– Kathy Morrison
2 S Luke Danielson – Carolyn Siracuse –
Janet Frisch – Ruth Jones

Wed-Thur KO Bracket 3 – 12 Tables

- 1 Alan Charters – B Bretzlaff – Patrick
Demerse – Judy Parks
2 Janet Perigo – Cay North – Anita Shore –
Esther Langer

Wed-Thu KO Bracket 4 – 12 Tables

- 1 Jan Flott – Linda Cook – Cathy Kay – Kathy
Hill
2 Jackie Potters – Jennifer Howard – Judy
Brown – Noreen Franklin

Thursday Swiss Teams – 46 Tables

- A B C
1 Christine Urbanek – Joan Eaton –
Joan Rose – Margaret Klamp
2 1 1 Difan Wang – Yan Wang – Jianfeng
Luo – Yingjiu Jin
7 2 2 Leonard Dale – Stephen Wells – Paul
Crossland – Rodger Haynes

Thursday Aft. Side Game – 9.0 Tables

- A B C
1 William Foster – B Gayle Phillips
2/3 Genevieve Roxborough – Bertram
Booth
2/3 1 Jean Johnson – Frances McConnell
4 2 1 Ivan Montgomery – Dominic Colucci
3 2 Marian Lynn Coveney – Elizabeth
Booth

Thursday Aft 299er Pairs – 7.5 Tables

- A B C
1 1 Joyce Greenspan – Arthur Matthies
2 2 Rudy Deier – Bonnie Deier

Thursday Open Pairs – 20.0 Tables

- A B C
1 Brian Macartney – George Morrissey
2 1 Sean Pryke – Jerry Manioci
5 2 Louise Fowler – Bob Saunders
1 Moira Hollingsworth – Dianne Aves
2 James Jones – Paula Jones

Thursday Evening Side – 8.5 Tables

- A B C
1 1 1 Betty Miller – Joe Darkes
2 2 2 Bruce Stewart – Hazel Hewitt

Morning Side Series – 10.0 Tables

- A B C
1 Andrew Firko – Roman Klein
2 1 1 Christine Pentesco – Dennis
Glazebrook
3 2 2 Diane Constantino – M Gretchen
Probst

Saturday AM 299er – 5.5 Tables

A B C

- 1 Gene Krejsa – Celeste Krejsa
 2 1 Gwenyth Conners – Elaine Davin
 2 Kenneth Gibson – Wendy Gibson

Friday AM Side Series – 17.5 Tables

A B C

- 1 Susan Stark – Jan Assini
 2 1 1 Barbara Murray – Mary Lovrics
 3 2 2 Paul Zittel – Linda Zittel

Friday Aft. Side Game – 11.0 Tables

A B C

- 1 1 Brian Meyer – Jean Picone
 2 2 1 Mary Macinnis – Shirley Barnes
 4 4 2 B Bretzlaff – Alan Charters

Friday Aft. 299er Pairs – 8.0 Tables

A B C

- 1 1 Bill Pope – Bev Pope
 2 2 Kenneth Wagner – Natalie Abramson

Friday Evening Swiss – 10 Tables

A B C

- 1 John McFadden – Marlene McFadden
 – Bruce Roberts – James Cole
 2 Ed Allan – Ted Boyd – Elizabeth
 McDowell – Cindy Mahn
 3 1 Dick Wilson – Marilyn Goldman – Lynn
 Ackerman – Dolores Toohey
 2 1 Bruce Stewart – Hazel Hewitt –
 Elizabeth Gallacher – Marilyn Le
 Brand

Friday Open Pairs – 29.0 Tables

A B C

- 1 Sam Maitra – David Hunt
 2 Ina Demme – Bill Kertes
 3 1 Judy Graf – Fred Yellen
 2 Elizabeth Leclair – Leigh Ives
 4 1 Chris Kleis – Charles Scholl
 2 Moira Hollingsworth – Dianne Aves

Friday Evening Side – 11.0 Tables

A B C

- 1 Steven Grzegorzewski – Chetan Mody
 2 1 Chantal Whitney – Nicholas Ogan
 3 2 1 Joel Britz – Jacqueline Britz
 5 4 2 Betty Miller – Joe Darkes

Wed-Thu AM Compact KO – 16 Tables

- 1 Donna Steffan – Jay Costello – Jay Levy
 – Bernard Fudor
 2 John Ziemer – Jerry Geiger – Chongmin
 Zhang – Xiao (Joe) Zhao

Morning Side Series – 16.0 Tables

A B C

- 1 1 1 John Bielinski – Diane Bielinski
 2 Robert Thornhill – Betsy Aaron
 3 2 2 Donald Lough – Douglas Worsnop

Thurs AM 299 – 6.0 Tables

A B C

- 1 Marilyn Sultz – Ruth Wurster
 2 1 Joyce Greenspan – Arthur Matthies
 3 2 Ron Ferguson – Fay McIntee

Morning Side Series – 38.25 Tables

- 1 Michael Ryan
 2 William Barbour

Saturday Aft 299ers – 9.5 Tables

A B C

- 1 Gene Krejsa – Celeste Krejsa
 2 Liz Campbell – Peter Campbell
 3 1 1 Gabriel Tannenbaum – David
 Donaldson
 5 2 2 Arthur Matthies – Paula Rosen

Saturday Aft Side Game – 10.0 Tables

A B C

- 1 Fleur Howard – Phillip Becker
 2 1 1 Suzanne Arnedt – Denyse Brochu
 3 2 2 Shakeel Ahmad – Manju Ceylony

Friday Saturday Compact – 8 Tables

- 1 Jan Flott – Linda Cook – Kathy Hill –
 Cathy Kay
 2 Dick Wilson – Marilyn Goldman –
 Suzanne Powell – Arlene Bristol

Saturday Eve Swiss – 14 Tables

A B C

- 1 John Tscholl – Jim Overcashier –
 Paul Holmes – Jerry Manioci
 2 Jay Levy – Jay Costello – Debbie
 Bennett – Hans Jacobs
 3 1 1 John Bielinski – Edward Becker Jr
 – Diane Bielinski – Scott Baldwin
 4 2 2 Margaret Dykstra – Elaine Gill – Liz
 Bryers – Janet Glazebrook

Saturday Eve. Side Game – 11.0 Tables

A B C

- 1 Andrew Firko – Roman Klein
 2/3 Barbara Wood – Malcolm Collins
 2/3 Marlene McFadden – John McFadden
 4 1 1 Peter Shui – Penny Shui
 6 2 2 Clare Obermeyer – Joanne Lane

Afternoon Side Series – 30.50 Tables

- 1 Barbara Libby
 2 Suzanne Powell

Evening Side Series – 38.50 Tables

- 1/2 Elbert Hargeseheimer III
 1/2 Christy Kellogg

Saturday Open Pairs – 26.5 Tables

A B C

- 1 Jonathan Steinberg – Martin Hunter
 2 Saleh Fetouh – Jim Mathis
 3 1 Ioana Ciura – Alexander Ciura
 8 2 1 Rick Jenkins – Clay Dahl
 3 2 Douglas Megill – Lana Creal

Friday Saturday KO – 9 Tables

- 1 Robert Kuz – Barbara Clinton – Vince Oddy – Barry Senensky
 2 Brent Gibbs – Despina Georgas – Wendy Krause – Arnold Krause

Fri-Sat KO Bracket 2 – 12 Tables

- 1 Peter G Brand – Krisztina Luttor – Effie Augustus – Peggy Pearson
 2 Frank Shostack – Jim De Boer – Sharon Berghaus – Paul Roth

Fri-Sat KO Bracket 3 – 12 Tables

- 1 Paul Crossland – Rodger Haynes – Stephen Wells – Leonard Dale
 2 Eileen Matheson – Korrie-Sue Marshall – Ann Wilkinson – Bonnie Bond

Fri-Sat KO Bracket 4 – 9 Tables

- 1 Ken Facer – Dorothy Facer – John Clarke – Andrzej Niewiadomski
 2 Edward Ruddy – Gail Ruddy – Marjorie Clark – John Clark

Saturday Compact KO Brk 1 – 13 Tables

- 1 Paul Janicki – Richard Chan – James Priebe – Weidong Shen
 2 Elizabeth Gallagher – Sheldon Pearlman – Bill Kertes – Ina Demme

Saturday Compact KO Brk 2 – 13 Tables

- 1 Louis Brooks – Marcia Syer – Jacqueline Britz – Joel Britz
 2 Nancy Mulhall – David Duff – Robert Spencer – Ned Bosanac

AX Swiss – 20 Tables

A X

- 1 Jonathan Steinberg – Martin Hunter – Julie Berdock – Michael Kenny,
 2 1 Paul Holmes – Jim Overcashier – John Tscholl – Jerry Manioci
 3/4 2 Shan Huang – Guixiang Xu – Jianfeng Luo – Yingjiu Jin

BCD Swiss – 42 Tables

B C D

- 1 1 John Bernhard – Carol Bolen – Chris Kleis – Charles Scholl
 2 2 Rodger Haynes – Paul Crossland – Leonard Dale – Stephen Wells
 5/6 5/6 1 Betty Miller – Robert Ryan – Kenneth Gibson – Wendy Gibson
 12 2 Peter Patterson – Henry Chudy, Jr – Peter Shui – Penny Shui

Buckeye State Sectional Garfield Hts., OH October 5-7, 2010

FRIDAY AFTERNOON OPEN – 26.0 Tables

A B C

- 1 Paul Facinelli – Dan Roseberry
 2 1 1 Sam Den – William Schumann
 3 2 Shirley Lundstrom – Barbara Schidlowski
 2 Elyn Schneier – Elaine Malin

FRIDAY AFTERNOON 299ERS – 9.0 Tables

A B C

- 1 Bill Quigney – Robin Quigney
 2 Marilyn Cagin – Phyllis Froimson
 3 1 1 Jane Pendley – Ellen Carter
 2 2 William Toler – Ann Kostell

FRIDAY EVENING OPEN – 19.5 Tables

A B C

- 1 Brian Ellis – Kumar Bhatia
 2 Roger Tiktin – James Reeve
 4 1 Susan Bussan – Judy Saccogna
 6 2 William Dickinson – Beverly Carter
 5 1 Bradley Sevcik – Sharon Bilek
 2 Alper Buldum – S Graham Kelly

FRIDAY EVENING 299ERS – 5.0 Tables

A B C

- 1 1 Kenneth Gibson – Wendy Gibson
 2 2 Jane Pendley – Ellen Carter

SATURDAY MORN B/C PAIRS – 18.0**Tables**

B C

- 1 Julia Allen – Harriet Adelstein
 2 John Marhofer – Charlotte Lavelle
 3/4 1 John Viola – Mary Alice Woodlock
 5 2 Fleur Howard – Charles Scholl

SATURDAY MORNING 299ERS – 8.5 Tables

A B C

- 1 Bill Quigney – Robin Quigney
 2 1 Georgia Laikos – Donald Snyder
 3 2 1 Georgia Dixon – Frances King
 5 3 2 Mady Kaiser – Nancy Levitan

KNOCKOUT TEAMS – 8 Tables

- 1 Philip MacFarlane – Donna Largent – Charles Ladiha – Michael Creager
 2 Beverly McMullen – Kitty Curto – Roy Larson – Leo Mann

SATURDAY AFTERNOON 299ERS – 5.5**Tables**

A B C

- 1 Bob Whyler – Glen Nazworth
 2 1 Ellen Carter – Jane Pendley
 3 2 Mitchell Eggers – David Bilek

FLIGHT A OPEN PAIR – 10.0 Tables

A X

- 1 1 Bernie Greenspan – Karl Zaman
 2 Kenneth Kranyak – Gena Bhatia
 5 2 Nicholas Hartung – Peter Merker

SATURDAY AFT B/C PAIRS – 16.0 Tables

B C

- 1 Michael Roberts – Marc Sylvester
 2 1 Charles Scholl – Fleur Howard
 4 2 Wm Roberts – Mary Roberts

SWISS TEAMS – 37 Tables

A B C

- 1 Kumar Bhatia – Bernie Greenspan – Phillip Becker – Brian Ellis
 2 Kenneth Kranyak – Laurie Kranyak – Kathleen Sulgrove – Don Sulgrove
 4 1 Diane Wasserman – Rosalyn Sukenik – Hope Ellis – Barbara Sobel
 5 2 Nicholas Hartung – Peter Merker – Wayne Ward – Bob Bartko
 7 1 Philip MacFarlane – James Pivarski Jr – S Graham Kelly – Alper Buldum
 9 2 J Lawniczak – Philip Dawson – Tucker Marston – Gordon Berry

499ER SWISS TEAMS – 4 Tables

A B C

- 1 Bob Whyler – Glen Nazworth – Jane Pendley – Ellen Carter

Pittsburgh Fall Sectional**Pittsburgh, PA****November 12-14, 2010****Friday Eve. Open Pairs – 17.5 Tables**

A B C

- 1 Paul Caplan – Catherine Caplan
 2 1 Art Bonneau – Mary Lou D'Altorio
 4 2 Fred Schenker – Frances Prus
 3 1 Todd Hertzberg – Steven Schwarzwaelder
 4 2 David Collura – Lauraine Duncan

Fri. Eve 299r Pairs – 4.0 Tables

D E F

- 1 Joann Szymeccki – Gale Perez
 2 1 Shirley Eskew – Gloria Hetzer
 3/4 2 Sylvia Williams – Karen Steele

Friday Aft. Open Pairs – 34.0 Tables

A B C

- 1 Arlene Port – Judy Haffner
 2 Ronald Franck – Jane Marshall
 3 1 1 Don Overcashier – Nancy Aquino
 2 Claire Morris – Joan Shapiro
 3 2 Lynne Ostrow – Vicki Kane

Friday Aft. 299er Pairs – 10.0 Tables

D E F

- 1 1 Geraldine Egerman – Lewis
Averbach
- 2 2 Judith Jacobs – Amy Tam
- 5 5 1 Charles Boguslawski – Iris
Nahemow
- 6 2 Marie Kilian – Catherine Lesjack

Saturday Morning 299ers – 9.5 Tables

D E F

- 1 1 Margaret Graham – Chase Bonnette
- 2 2 Karen Piper – Tom Piper
- 3 3 1 Kenneth Stiger – Joanna Lhota
- 5 5 2 Susan Podgers – Marilyn Siebart

Saturday Morning Pairs – 26.0 Tables

A B C

- 1 Harold Haffner – Judy Haffner
- 2 Margery Tamres – Joseph Brady
- 4 1 Wayne Obitz – James Gray
- 5 2 Henry Nelson – William Lindgren
- 3 1 Willa Dean Lowery – Jack Charles
- 6 2 John Scalzo – Eleanor Scalzo

Compact Ko's – 9 Tables

- 1 Ronald Franck – Fred Schenker – Jane
Marshall – Dan Roseberry
- 2 Richard Krauland – Russell Poppleton –
Victor Vertes – Marlene Zinamon

Handicap Bracketed KO-BK1 – 5 Tables

- 1 William Holt – Robert Park – Constance
Hoechstetter – Robert Quinlan
- 2 Gloria Moser – Barbara Norante –
Lorraine Worsley – Robert Freemon

Handicap Bracketed KO-BK2 – 5 Tables

- 1 Lynne Ostrow – Vicki Kane – Joseph
Secka Sr – Paula Shrut
- 2 Ronald Grassel – James Zaccardi – Faye
Adelsberg – Nell Burney

Handicap Bracketed KO-BK3 – 6 Tables

- 1 Russell Sheldon – Ranjana Gupta – Karen
Bock – Gary Wire
- 2 Alan Mannheimer – Darlene Mannheimer
– Donald Turacy, Sr – Peggy Witsberger

Saturday Afternoon Pairs – 17.5 Tables

A B C

- 1 1 Henry Nelson – William Lindgren
- 2 Barbara Klein – James Klein
- 6 2 1 Patricia Swedlow – Judith
Zimmerman
- 6 2 Tom Jolly – Thomas Henderson

Saturday Swiss Teams – 18 Tables

A B C

- 1 Mary Paulone Carns – Warren
Oberfield – Frank Cymerman – Asim
Ulke
- 2 1 1 Patricia Evans – Gloria Hetzer –
Janis Davis – Dale Gregg
- 4 2 Ami Elis – Nurit Elis – John Gillette –
Joanne Zambroski
- 4 2 Carol Beardmore – Pauline Sostarich
– Terence Murray – Rebecca Murray

Sunday Swiss Teams – 39 Tables

A B C

- 1 Richard Katz – Patricia Katz – Florine
Walters – Asim Ulke
- 2 1 Jean Prior – Janice Phillips – Sarah
O'Neill Helm – Donald Averbach
- 7 2 Robert Zimmermann – Peter Howell
– Paul Caplan – Catherine Caplan
- 10 4 1 Sandra Harris – Laurie Igiel – Bharat
Shah – Elaine Mast
- 12/13 6 2 Roy Larson – Leo Mann – Kitty Curto
– Beverly McMullen

Sunday 299er Teams – 6 Tables

D E

- 1 1 Thomas Donehoo – Lynn Thiel – Jo
Anne Mujwit – Rita Gavert
- 2 Karen Steele – Sylvia Williams –
Susan Wald – Betty Elias

District 5 STaC**Various Clubs****December 6-12, 2010****Mon Morn Championship – 53.5 Tables**

A B C

- 1 1 Barbara Libby – Richard Czarnecki
- 2 2 Constance Bogan – Carl Winters
- 4 3 1 Husein Nakhlooda – Victor Shaia
- 5 4 2 Linda Zittel – Paul Zittel

Mon Morn Open Pairs – 3.0 Tables

A B C

- 1 Carol Ann Kuhlke – Betty McGraw
 2 Boots Frey – Barbara Hale

Mon Aft Championship – 69.5 Tables

A B C

- 1 1 Irene Toth – Eileen Kless
 2 Davis Bonner – Robert Alexander
 3 2 Marcella Retetagos – Sandra Spear-Brand
 3/4 1/2 Beverly Cassidy – Patsy Boyer
 3/4 1/2 Sam Den – William Schumann

Mon Aft O-NLM Pairs – 9.5 Tables

A B C

- 1 Judy Fishman – Daryl Bailey
 2 Phyllis Froimson – Carol Gray
 3 1 Bernard Goodman – Susan Goodman
 4 2 1 Nancy Levitan – Steve Levitan
 2 Norma Markowitz – Susan Gordon

Mon Aft Invitational – 10.0 Tables

A B C

- 1 1 1 Elisabeth Alexander – Mary Smith
 2 2 2 Janet Auwerter – Jean Keller

Mon Aft O-200 Pairs – 11.5 Tables

A B C

- 1 1 1 Carol Stuart – Fran Steger
 2 2 2 Gerry Tessler – Clementine Solari

Mon Eve Open Pairs – 6.5 Tables

A B C

- 1 1 1 Henry Borger – June Borger
 2 Elbert HargesheimerIII – Judy Graf
 3 2 Harry Conarro – Mary Conarro
 2 Elizabeth Howe – Carol Lake

Mon Eve Championship – 29.5 Tables

A B C

- 1 1 1 Indira Agarwal – Subhash Agarwal
 2 2 Norma Grooms – Peter Halmos
 4 3 2 Frank Siffrinn – James Fox

Mon Eve Open – 2.50 Tables

A B C

- 1/4 1/3 William Feeny
 1/4 Marian Myers
 1/4 1/3 Jennifer Di Vittis
 1/4 1/3 Lozettis Di Vittis

Tue Morn Championship – 52.0 Tables

A B C

- 1 Jan Assini – Susan Stark
 2 Shirley Burke – Doris Tubbesing
 1 Vincent Pesce – Mike Silverman
 2 Mark Niemi – R Meyer
 1 Paula Madvid – Evelyn Charna
 2 Victor Shaia – Husein Nakhooda

Tue Aft Championship – 26.5 Tables

A B C

- 1 1 Eileen Gold – Eileen Kless
 2 Carl Hamill – Barbara Norante
 2 Michael Kiesel Jr – Judie Bailey
 3 1 Don Grant – Robert Alan Davis
 6/7 2 Joseph Rooney – Paul Zittel

Tue Aft O-NLM Pairs – 22.0 Tables

A B C

- 1 1 Helen Klink – Fran Rubin
 2 2 1 Estelle Katz – Jake Katz
 4 3 2 Sheila Catz – Ila Oaks

Tue Eve Championship – 30.0 Tables

A B C

- 1 Robert Alexander – Stephanie Alexander
 2 1 1 Ildiko Baxter – Gunhild Alius
 4 2 Barbara Schidlowski – Shirley Lundstrom
 2 Dennis Pittman – Nancy Aquino

Tue Eve Open Pairs – 4.0 Tables

A B C

- 1 1 1 Carol Gibboney – Dennis Gibboney
 2 2 Peggy McFeaters – Ron Garris;
 3 3 2 K Piper – T Piper

Wed Morn Championship – 27.0 Tables

A B C

- 1 Randolph Seidenberg Jr – Fred Yellen
 2 1 1 Douglas Findlay – Nancy Findlay
 3 2 John Ziemer – Charles Schorr
 4 3 2 Felice Brody – Toby Wolfe

Wed Morn Invitational – 16.5 Tables

A B C

- 1 1 1 Michele Kunk – Renate Duchesneau
 2 2 Patricia Novak – Lisa Basch
 6 5 2 Marilyn Matia – Nancy Schreck

Wed Aft Championship – 60.0 Tables

A	B	C
1		Larry Long – Richard Early
2		Bernard Fudor – Gail Carns
3	1	Barbara Fortay – Richard Leone
7	2	Bunny Kerr – Theresa Wagner
	5	1 Carol Beardmore – Ronald Carter
	2	William Kintz – Daniel Flanagan

Wed Aft Invitational – 6.0 Tables

A	B	C
1	1	Harriet Kitay – Cheryl Halpern
2		Edia Shai – Judith Sturman
3	2	1 Marc Jacobson – Barbara Speer
4/5	3/4	2/3 Marlyn Gilbert – John Hibshman
4/5	3/4	2/3 Nancy Fingerhut – Barbara Peterman

Wed Aft Open Pairs – 4.0 Tables

A	B	C
1	1	1 Jeffrey Leeson – Lewis Stone
2	2	2 George Lupone – Peggy Gallagher

Wed Eve Championship – 26.5 Tables

A	B	C
1		Lois DiPlacido – Judie Lamberton
2		Alice Williams – Barbara Belardi
3	1	Nancy Wolstoncroft – E Finton
	2	1 William Rich – Henry Chudy, Jr
	4	2 Sheila Rabovsky – Cynthia Custer

Wed Eve Open Pairs – 11.0 Tables

A	B	C
1	1	Frederick Wilson – Alexander Bealles
2	2	E. Helen Gorsuch – Jean Keller
3	3	1 Jean Purvis – C Nicholas Tredennick
5	5	2 Andrew Fusco – Andrew Cockburn

Wed Eve Invitational – 6.5 Tables

A	B	C
1	1	Sandra Marcussen – Anne O'Connor
2	2	1 Alicia Kolipinski – Allan Dickman
4	4	2 Edna Fill – Nancy Acara

Thu Morn 0-500 Pairs – 3.0 Tables

A	B	
1		Paul Slovan – Bill George
2	1	Louise Kannensohn – Karen Kreps
	2	Tess Hickey – Chris Kannal

Thu Morn Championship – 36.0 Tables

A	B	C
1	1	Jerri Harper – Fran Mangano
2	2	Bruce Burr – Ross Markello
4	3	1 Cathy Taylor – Mary Mardis
	2	Mary Ann Leibold – Robert Leibold

Thu Aft Championship – 54.5 Tables

A	B	C
1		Robert Alexander – Marjorie Melamed
2		Harold Fast – Diane Wasserman
4	1	Fenton Harrison – Robert Linn
5	2	Harry Cheung – John Ziemer
	1	Ranjana Gupta – Curt Woodhead
	2	Joseph Rooney – Paul Zittel

Thu Aft Open Pairs – 3.5 Tables

A	B	C
1	1	Carl Hurd – Kent Stiffler
2	2	1 Edward McCauley – Irving Seltzer

Thu Aft 0-NLM Pairs – 7.5 Tables

A	B	C
1	1	Larry Soong – Arthur Matthies
2	2	1 Betsy Heuer – Richard Heuer
3	3	2 Agi Maisel – Carla Press

Thu Eve Open Pairs – 4.0 Tables

A	B	C
1	1	William Stewart – Alexander Bealles
2	2	Robert Freemon – John Kristufek

Thu Eve Championship – 38.5 Tables

A	B	C
1		Chet Mody – Steven Grzegorzewski
2		Jim Overcashier – Donald Little
4	1	Christopher Wang – James Gray
5	2	1 Jane Yusavage – Tom Yusavage
	4	2 Don Osborne – Frank Smith

Thu Eve 0-NLM Pairs – 4.0 Tables

A	B	C
1		Shirley Eskew – Gloria Hetzer
2		Samuel Bliman – Harvey Notarius

Fri Morn Championship – 62.5 Tables

A	B	C
1		Joan Rose – Christine Urbanek
2		Bernard Fudor – Gail Carns
3	1	1 Sheryl Hershock – Judith Vittone
4	2	Marian Myers – Arlene Jacobelli
	2	Carol Steele – Carol Russell

Fri Morn 0-50 Pairs – 5.5 Tables

A	B	C
1	1	1 Naomi Faust – Diane Wisniewski
2	2	Barbara Lorei – Josephine Desantis
4	3	2 Pat Fink – Anna West

Fri Morn Open Pairs – 4.5 Tables

A	B	C
1	1	Carolyn Siracuse – Elizabeth Clark
2	2	William Rieker – Robert Andersen

Fri Aft Championship – 18.5 Tables

A B C

- 1 Jean Prior – Donald Averbach
 2 1 Dale Anderson – June Feuerstein
 3 2 James Fox – Russell Sheldon
 4 3 1 Paula Salamone – Jini Rubinstein
 2 Anthony Matrazzo – Carole Johnson

Fri Aft Invitational – 10.5 Tables

A B C

- 1 Susan Stark – Pat Chisholm
 2 1 1 Lucille Race – Lois Rau
 4 2 2 Sue Rubin – Joyce Glickman

Fri Eve Championship – 43.0 Tables

A B C

- 1 Barbara Bergman – Kenneth Bergman
 2 Monica Early – Richard Early
 4 1 Donald Moyer – Carolyn Sullivan
 5 2 Viv Shanafelt – Gary Montain
 1 Mathew Van Sickle – Alper Buldum
 2 Ed Regal – Faye Regal

Fri Eve Open Pairs – 4.0 Tables

A B C

- 1 1 Penny Shui – Peter Shui
 2 2 Diane Bielinski – John Bielinski

Sat Morn Championship – 29.0 Tables

A B C

- 1 Eugene Gordon – Jack Knudson
 2 Jerry Geiger – John Ziemer
 3 1 Helen Panza – Mike Silverman
 4 2 1 Arthur Heuer – Daniel Solow
 5 3 2 William Schumann – Sam Den

Sat Morn Open Pairs – 2.5 Tables

A B C

- 1 Mark Pascale – Christine Urbanek
 2 Elbert HargesheimerIII – Christy Kellogg

Sat Aft Championship – 24.0 Tables

A B C

- 1 Barbara Bergman – Kenneth Bergman
 2 1 S Luke Danielson – Nancy Wolstoncroft
 4 2 1 Jack O'Rourke – Donna Basile
 6 2 Jim Madan – Mike Silverman

Sat Aft Open Pairs – 2.5 Tables

A B

- 1 1 William Feeny – Twila Stevenson
 2 2 Ernest Ed Collins – Judy Collins

Sat Aft Invitational – 4.5 Tables

A B C

- 1 1 1 Al Obermeyer – Clare Obermeyer
 2 2 Aloise Bates – McKinley Whittlesey;
 3 3 2 Eleanor(Hap) Kidder – Fred Kidder

Sat Eve Championship – 11.0 Tables

A B C

- 1 Barbara Bacon – Sharon Fairchild
 2 1 John Gregory – M Jane Gregory
 4 2 Betsy Wilson – Karl Zaman
 1 David Bilek – John Watts
 2 Charles Wen – David Sah

Sunday Open Swiss Teams – 20 Tables

A B C

- 1 Paul Facinelli – Don Sulgrove – Kathleen Sulgrove – Keith Sechler – Dan Roseberry
 2 Marjorie Baldwin – Greg Michaels – Pat Chisholm – Beverly Cohen
 4 1 1 James Stahl – Linda Stahl – Janet Rice – Thomas Rice
 5/6 2/3 Jerri Harper – John Harper – Nancy Hunter – Rosemary Kleis
 5/6 2/3 Roy Larson – Leo Mann – Victor Vertes – Marlene Zinamon
 5 2 Sue Pisanelli – Charleen Drotning – Gunhild Alius – John Cahill

Sunday Open Swiss Teams – 12 Tables

A B C

- 1 Harold Haffner – Judy Haffner – Florine Walters – Asim Ulke
 2 1 Robert Zimmermann – Peter Howell – Catherine Caplan – P Caplan
 2 Ami Elis – Nurit Elis – Joanne Zambroski – John Gillette
 1 Lynne Ostrow – Vicki Kane – Nithi Sivaneri – Thomas Hodous

Sunday Open Swiss Teams – 9 Tables

A B C

- 1 Jerry Geiger – John Ziemer – Elizabeth Clark – Harry Cheung
 2 1 1 Paul Zittel – Linda Zittel – Bill Boardman – Joseph Rooney
 3 2 2 Janet Frisch – Dorothy May – Michael Kozower – Ruth Kozower

Sun Aft Championship – 29.0 Tables

A B C

- 1 Michael Roberts – Nancy Michael
 2 Randolph Seidenberg Jr – Fred Yellen
 6/7 1 Vernon DeJong – Dolores Bloom
 2 1 Karen Kreps – Ronald Carter
 2 Rebecca Murray – Terence Murray